

abbotFox

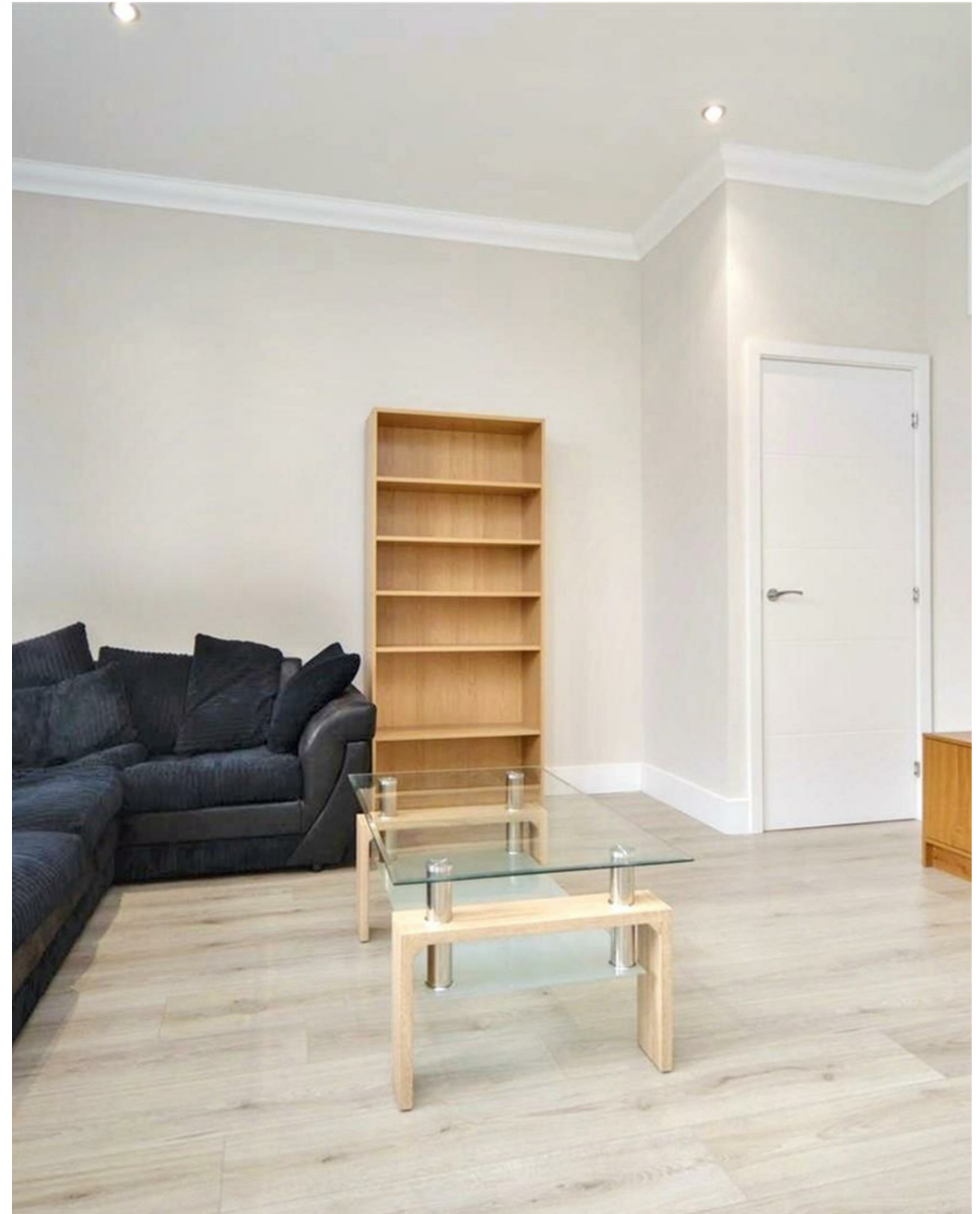


City Centre, NR1
£215,000

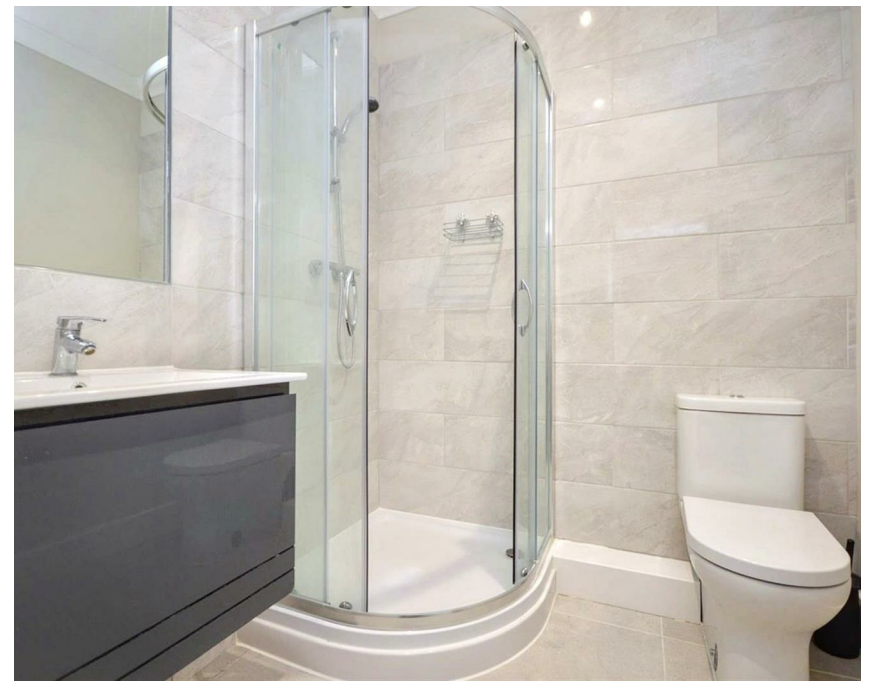
“

We are a team of genuine individuals who hold a deep passion for both property and marketing. Collectively, we bring over 70 years of experience in the property market of Norfolk and Suffolk. Our affection for both counties runs deep, and we are enthusiastic about sharing our passion with you.

Colin McKenzie | **Branch Partner**







THE DETAIL _____

abbotFox presents this stylish two-bedroom apartment, set within the sought-after Sentinel House development.

Finished to a high standard throughout, this home offers an open-plan living space with a modern fitted kitchen, two well-proportioned bedrooms and a contemporary bathroom. With the additional benefit of allocated parking, this apartment is perfectly suited to city living.

Located within easy reach of Norwich city centre and a wide range of local amenities, this property represents an ideal opportunity for first-time buyers and investors alike.



THE HIGHLIGHTS _____

- Stylish apartment
- Two bedrooms
- Allocated parking
- Residents gym
- Residents lounge
- Concierge service
- Internal viewing advised

Let's talk

01603 660000

sales@abbotfox.co.uk

[@abbotfox](#)

EPC RATING -

Disclaimer – In accordance with the Property Misdescriptions Act, the company abbotFox gives notice that all descriptions, references to condition, necessary permissions for use and other details are given in good faith and believed to be correct, but any purchaser should not rely on them as statements of fact, and must satisfy themselves by inspection or other means, as to their accuracy.